

# CCS Technical Documentation

## RH-41 Series Transceivers

# Disassembly



## Disassembling the RH-41 Basic Transceiver

### Remove the back cover.

1.

Step 1. Push down hard on the button.

Step 2. Slide the cover in the direction of the arrow.



2.

### Remove the battery.

Step 1. Place fingers on both ends of the battery latch.

Step 2. Push the latch away from the battery.  
The battery will bounce off.

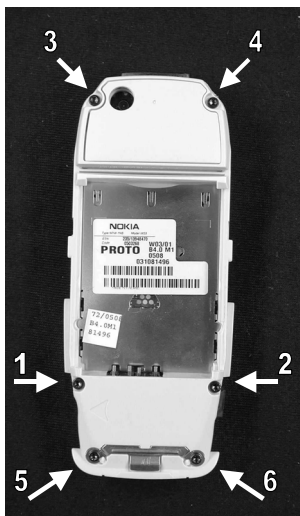
3.

### Remove the front cover.

Step 1. Get a firm hold on the phone around the accessory interfaces (in the D-cover).

Step 2. Hold the side of the front cover as indicated by the arrow in the D-cover.

Step 3. Lift the side up.



4.

Remove the PWB from the housing.  
Remove six screws.

**Note:** The picture shows the assembly order.  
**Assembly is in the reverse order.**



**5.**

**Disassemble C- and D-covers.**

Step 1. Place a screwdriver with a chisel point between the C- and D-covers' snap feature.

Step 2. Lift the D-cover.



**Note:** The screwdriver must not hit the engine module's components during disassembly.



**6.**

Step 3. Remove the system connector.

The system connector assembly should stay on the engine when the D-cover is moved. It can be removed manually.

**Note:** The use of gloves is mandatory while removing the system connector, in order to prevent fingerprints from appearing on the engine and the springs. The springs may be damaged, if touched.



**7.**

Step 4. Remove the engine module.

**Note:** The use of gloves is mandatory while removing the engine module, in order to prevent fingerprints from appearing on the engine.

The engine module can be removed manually.

**Note:**

*If the RF shield lid is removed, replace it with a new one as it is vital that the shield is absolutely straight so that spurious radiation does not occur.*

*When removing the shield lid, please pay special attention to how it is done. The lid needs to be removed extremely carefully, so as not to damage any other parts of the radio module. Please use tweezers or a small screwdriver to remove the shield lid. Snap it open carefully.*



**8.**

**Remove the LCD module.**

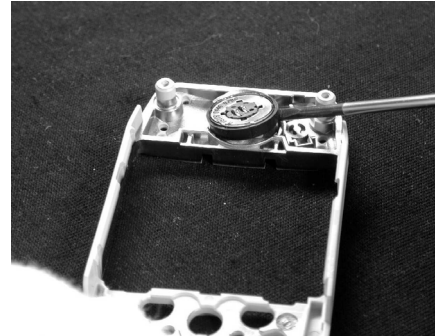
Step 5. Lift it off the C-cover.

**Note:** If the LCD module is to be reused, the use of gloves is mandatory to prevent fingerprints from appearing on the domes and elastomer connector. The domes and the elastomer connector may be damaged, if touched.



9.

Step 4. Remove the speaker assembly from the C-cover.



**Note:** Handle with care, as the speaker and the springs may be damaged, if touched.



10.

**Remove the battery latch.**

Step 5. Get a firm hold on the middle of the latch.

Step 6. Bend the latch and push it away from the antenna.



11.

**Remove the antenna.**

Step 7. Place a flathead screwdriver between the antenna and the D-cover.

Step 8. Lift the antenna.

**Note:** The antenna's snap feature may be damaged during disassembly. The broken snap will not prevent the reuse of the antenna.



12.

Step 9. Remove the IR window.

You can remove the IR window once the antenna has been removed.



13.

**Remove the battery connector.**

Step 10. Push the battery connector from the battery side to remove it.

**Note:** Do not reuse the battery connector after disassembly.



**14.**

**Remove the release spring.**

Step 11. Use a flathead screwdriver to remove the release spring from the D-cover.

The heat-staking features will break during disassembly.

**Note:** The broken heat-staking features will not prevent replacing a new release spring or buzzer onto the cover.



**15.**

**Remove the vibra assembly.**

Step 12. Lift the vibra assembly from its slot. Use a screwdriver or your finger.



**16.**

**Remove the buzzer assembly.**

Step 13. Place a screwdriver with a chisel-point between the buzzer assembly and the D-cover.

Step 14. Lift the buzzer assembly.

The heat-staking features will break during disassembly.

**Note:** The broken heat-staking features will not prevent the use of the buzzer.



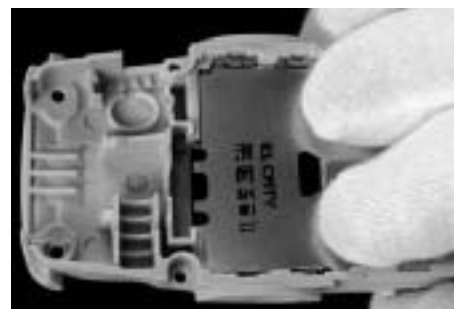
**17.**

**Remove the metal deck.**

Step 15. Release the four side locks with a screwdriver.

Step 16. Push the metal deck from the engine's side.

**Note:** Do not reuse the metal deck after disassembly.





The main parts of the phone disassembled.

